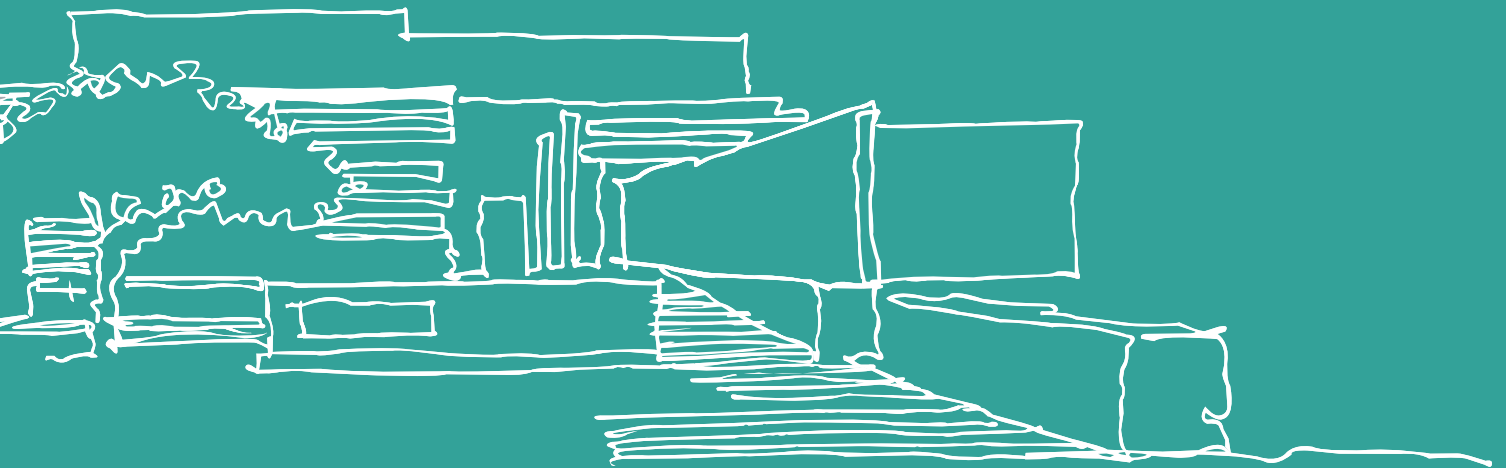


**STIAS-WALLENBERG ROUNDTABLE ON MHEALTH**  
IMPLEMENTING IMAGE-BASED MOBILE TECHNOLOGY  
FOR DIAGNOSTICS AND TREATMENT TO IMPROVE  
ACCESS AND EQUITY IN HEALTH CARE  
20 – 21 FEBRUARY 2017

A CREATIVE SPACE FOR THE MIND



stias

STELLENBOSCH INSTITUTE FOR ADVANCED STUDY  
STELLENBOSSE INSTITUUT VIR GEVORDERDE NAVORSING

# CONTEXT OF THE STIAS-WALLENBERG ROUNDTABLES

The objectives of the Stellenbosch Institute for Advanced Study (STIAS) are to advance the cause of science and scholarship and invest in the intellectual future of the country; to focus on Africa; and to provide an independent space where innovative ideas and original thinking can thrive.

In addition, STIAS facilitates dissemination of research results and insights obtained in its research programme to a wider public. This includes creating platforms for dialogue amongst academia, policy makers, professionals and practitioners, business and industry and civil society structures.

Within this context, the Marianne and Marcus Wallenberg Foundation, key funders of the STIAS programme, supports an annual roundtable forum where representatives from South Africa, Sweden and a broader international community can engage in dialogue and debate around a central theme, typically one related to current global challenges, and in particular focusing on its local manifestation.

The first Roundtable (2013) focused on the energy and electricity landscape in South Africa, with the theme: “Investment and technology choices in the SA power sector: economic, social and environmental trade-offs”.

The 2014 Roundtable focused on “Mental health challenges in Sub-Saharan Africa: Moving to implementation.”

The third Roundtable in 2015, focused on “Strategic directions for agricultural transformation in Southern Africa”.

The fourth Roundtable focused on innovation policy, with the theme “Innovation for prosperity”.

## THE 2017 ROUNDTABLE THEME

The mHealth Roundtable theme is ***Implementing image-based mobile technology for diagnostics and treatment to improve access and equity in health care.***

The focus and framework for the 2017 Roundtable were developed during preparatory workshops in August and November 2016.

Although mHealth has been around for some time in various forms and applications, this Roundtable forum strives to focus

more particularly on developments in image-based mHealth and its possible applications in clinical settings, on implementation challenges and on the system wide consequences for improved access and equity in health care in resource-constrained settings.

## EXPECTED OUTCOMES OF THE ROUNDTABLE

The expected outcomes of the Roundtable are

- A special issue of the journal *Global Health Action* which will be devoted to mHealth in its entirety. Contributions to this issue have been solicited by members of the Coordination Committee, who are also responsible for the peer-review processes and the final editing of the accepted contributions.
- Challenges and opportunities for the development of mHealth will be discussed during the course of the Roundtable with a view to develop a *roadmap* for the implementation, expansion and up-scaling in resource-constrained settings such as Africa.

The roadmap, together with ideas, comments and criticisms from the Roundtable will inform the final editorial overview of the contributions in the special issue of *Global Health Action*.

The Roundtable will be held at STIAS over two days from 20 to 21 February 2017.

# SESSIONS OVERVIEW OF ROUNDTABLE PROGRAMME

**THEME:** IMPLEMENTING IMAGE-BASED MOBILE TECHNOLOGY FOR DIAGNOSTICS AND TREATMENT TO IMPROVE ACCESS AND EQUITY IN HEALTH CARE

**ROUNDTABLE SESSIONS OVERVIEW –  
MONDAY 20 & TUESDAY 21 FEBRUARY 2017**

|                    |                                                            |                                                                                                                                                   |
|--------------------|------------------------------------------------------------|---------------------------------------------------------------------------------------------------------------------------------------------------|
| <b>Monday 20/2</b> | <b>09:00 – 17:45</b>                                       |                                                                                                                                                   |
| <b>Session 1</b>   | <b>INTRODUCTION AND WELCOMING MESSAGES</b>                 |                                                                                                                                                   |
| <b>Session 2</b>   | <b>THE LANDSCAPE OF IMAGE-BASED MHEALTH</b>                |                                                                                                                                                   |
|                    | <b>Aim:</b>                                                | Macro perspectives on mHealth development – barriers and facilitators at regional and country levels                                              |
|                    | <b>Question for discussion:</b>                            | How should the most important barriers to the implementation of image-based mHealth in the clinical setting be overcome?                          |
| <b>Session 3</b>   | <b>MHEALTH FOR CLINICIANS</b>                              |                                                                                                                                                   |
|                    | <b>Aim:</b>                                                | Feasibility and desirability of mHealth clinical solutions from the perspectives of the health transition and ICT, and health systems development |
|                    | <b>Question for discussion:</b>                            | How can front-line health care workers be enabled to adopt image-based mHealth in their practice?                                                 |
| <b>Session 4</b>   | <b>INTEGRATION INTO CLINICAL CARE: POLICY AND PRACTICE</b> |                                                                                                                                                   |
|                    | <b>Aim:</b>                                                | Identify mechanisms to overcome challenges of implementing mHealth – from health policy to practice                                               |
|                    | <b>Question for discussion:</b>                            | Which are the key strategies to overcome organisational challenges to the implementation of image-based mHealth within the health sector?         |
| Evening            | Roundtable dinner (STIAS)                                  |                                                                                                                                                   |

|                     |                                                                              |                                                                                                                                                                                                                              |
|---------------------|------------------------------------------------------------------------------|------------------------------------------------------------------------------------------------------------------------------------------------------------------------------------------------------------------------------|
| <b>Tuesday 21/2</b> | <b>09:00 – 17:00</b>                                                         |                                                                                                                                                                                                                              |
| <b>Session 5</b>    | <b>PREREQUISITES TO THE IMPLEMENTATION AND EXPANSION OF MHEALTH CAPACITY</b> |                                                                                                                                                                                                                              |
|                     | <b>Aim:</b>                                                                  | Macro perspectives on mHealth development – barriers and facilitators at regional and country levels                                                                                                                         |
|                     | <b>Question for discussion:</b>                                              | Which are the key strategies to overcome technical challenges in implementing image-based mHealth within the health sector?                                                                                                  |
| <b>Session 6</b>    | <b>BUILDING MHEALTH LEADERSHIP AND DEVELOPING CHANGE AGENTS</b>              |                                                                                                                                                                                                                              |
|                     | <b>Aim:</b>                                                                  | Identify the main decisions and activities in pushing for leadership in mHealth                                                                                                                                              |
|                     | <b>Question for discussion:</b>                                              | For each category of stakeholders represented at the RT, what are the most important priorities to build and sustain leadership in mHealth?                                                                                  |
| <b>Session 7</b>    | <b>ROADMAP FOR MHEALTH ASSISTANCE IN CLINICAL SETTINGS</b>                   |                                                                                                                                                                                                                              |
|                     | <b>Aim:</b>                                                                  | On basis of the Roundtable discussions, assess which measures need to be prioritised for mHealth development in general and image-based solutions in particular, in order to especially serve resource-constrained settings. |
| <b>Session 8</b>    | <b>CLOSING</b>                                                               |                                                                                                                                                                                                                              |

# DETAILED ROUNDTABLE PROGRAMME

**THEME:** IMPLEMENTING IMAGE-BASED MOBILE TECHNOLOGY FOR DIAGNOSTICS AND TREATMENT TO IMPROVE ACCESS AND EQUITY IN HEALTH CARE

**VENUE:** STIAS-WALLENBERG CONFERENCE CENTRE, 10 MARAIS STREET, STELLENBOSCH, SOUTH AFRICA

| SUNDAY 19 FEBRUARY 2017 |                                                                                                                                                               |                                                      |
|-------------------------|---------------------------------------------------------------------------------------------------------------------------------------------------------------|------------------------------------------------------|
| 18:00 – 20:00           | Informal welcoming function (Barbecue / Braai) at STIAS                                                                                                       |                                                      |
| MONDAY 20 FEBRUARY 2017 |                                                                                                                                                               |                                                      |
| 08:00 – 09:00           | Registration                                                                                                                                                  |                                                      |
| SESSION 1               | INTRODUCTION AND WELCOMING MESSAGES                                                                                                                           | Moderator: Johann Groenewald                         |
| 09:00 – 09:30           | Message from STIAS                                                                                                                                            | Hendrik Geyer                                        |
|                         | Message from the MMW Foundation                                                                                                                               | Maud Olofsson                                        |
|                         | Message from Sweden's Embassy in South Africa                                                                                                                 | Sara Aulin                                           |
| 09:30 – 10:10           | KEYNOTE ADDRESSES:                                                                                                                                            |                                                      |
| 10:10 – 10:20           | Overview and expectations of the Roundtable                                                                                                                   | Lucie Laflamme                                       |
| 10:20 – 10:45           | Refreshments                                                                                                                                                  |                                                      |
| SESSION 2               | THE LANDSCAPE OF IMAGE-BASED MHEALTH                                                                                                                          |                                                      |
|                         | <b>Aim:</b> Macro perspectives on mHealth development – barriers and facilitators at regional and country levels                                              | <b>Moderators:</b> Pauline Bakibinga, Lars Weinehall |
| 10:45 – 11:25           | Long term benefits of mHealth (McKinsey report)                                                                                                               | Catharina Barkman                                    |
|                         | Imaged based medical technology: current developments and future perspectives                                                                                 | Johan Lundin                                         |
|                         | Broadband capabilities for mHealth deployment                                                                                                                 | Shiletsi Makhofane                                   |
|                         | Global burden of disease – an overview of global health challenges                                                                                            | Peter Nyasulu                                        |
| 11:25 – 12:25           | Discussion and feedback                                                                                                                                       |                                                      |
|                         | <b><i>How should the most important barriers to the implementation of image-based mHealth in the clinical setting be overcome?</i></b>                        |                                                      |
| 12:25 – 13:45           | Group photo and lunch                                                                                                                                         |                                                      |
| SESSION 3               | MHEALTH FOR CLINICIANS                                                                                                                                        |                                                      |
|                         | <b>Aim:</b> Feasibility and desirability of mHealth clinical solutions from the perspectives of the health transition and ICT, and health systems development | <b>Moderators:</b> Lucie Laflamme, Peter Nyasulu     |
| 13:45 – 14:25           | Mobile microscopy                                                                                                                                             | Isaac Bogoch                                         |
|                         | An app for acute burns                                                                                                                                        | Marie Hasselberg                                     |
|                         | Scaling the Vula app: from one small team to multiple specialities                                                                                            | Debré Barrett                                        |
|                         | Lessons from the field: integrating mHealth into front line emergency care                                                                                    | Halima Adam / John Bosco Kamugisha                   |
| 14:25 – 15:30           | Discussion and feedback                                                                                                                                       |                                                      |
|                         | <b><i>How can front-line health care workers be enabled to adopt image-based mHealth in their practice?</i></b>                                               |                                                      |
|                         | Refreshments available in foyer                                                                                                                               |                                                      |

| SESSION 4 INTEGRATION INTO CLINICAL CARE: POLICY AND PRACTICE |                                                                                                                                                         |                                                      |
|---------------------------------------------------------------|---------------------------------------------------------------------------------------------------------------------------------------------------------|------------------------------------------------------|
|                                                               | <b>Aim:</b> Identify mechanisms to overcome challenges of implementing mHealth – from health policy to practice                                         | <b>Moderators:</b><br>Johan Lundin, Marie Hasselberg |
| <b>15:30 – 16:15</b>                                          | Integrating mHealth at point of care: the user perspective                                                                                              | Mohammed Dalwai                                      |
|                                                               | Technology and behavioural change – Vula examples                                                                                                       | Debré Barrett                                        |
|                                                               | mHealth – the case of Ghana: a health systems perspective                                                                                               | Kerstin Klipstein-Grobusch                           |
|                                                               | Policymakers, stakeholders and mHealth: roles and expectations                                                                                          | Lars Weinehall /<br>Catharina Barkman                |
| <b>16:15 – 17:15</b>                                          | Discussion and feedback                                                                                                                                 |                                                      |
|                                                               | <b><i>Which are the key strategies to overcome organisational challenges to the implementation of image-based mHealth within the health sector?</i></b> |                                                      |
| <b>17:15 – 17:45</b>                                          | Summing up the first day – plenary                                                                                                                      | Lucie Laflamme<br>Lee Wallis                         |
| <b>19:00 for 19:15</b>                                        | Roundtable dinner                                                                                                                                       | (STIAS)                                              |

| TUESDAY 21 FEBRUARY 2017                                                        |                                                                                                                                                           |                                                        |
|---------------------------------------------------------------------------------|-----------------------------------------------------------------------------------------------------------------------------------------------------------|--------------------------------------------------------|
| SESSION 5 PREREQUISITES TO THE IMPLEMENTATION AND EXPANSION OF MHEALTH CAPACITY |                                                                                                                                                           |                                                        |
|                                                                                 | <b>Aim:</b> Macro perspectives on mHealth development – barriers and facilitators at regional and country levels                                          | <b>Moderators:</b><br>Guy Dumont, Debré Barrett        |
| <b>09:00 – 09:40</b>                                                            | ICT Regulation to support mHealth opportunities                                                                                                           | Hodge Semakula                                         |
|                                                                                 | Institutionalizing human computer interaction for global health                                                                                           | Jan Gulliksen                                          |
|                                                                                 | Partnership and development decisions                                                                                                                     | Carlos Yerena                                          |
|                                                                                 | Mobile health worldwide: financial resources and cost considerations / resources for system scaling up and sustainability                                 | Stefan Fölster                                         |
| <b>09:40 – 10:40</b>                                                            | Discussion and feedback                                                                                                                                   |                                                        |
|                                                                                 | <b><i>Which are the key strategies to overcome technical challenges in implementing image-based mHealth within the health sector?</i></b>                 |                                                        |
|                                                                                 | Refreshments available in foyer                                                                                                                           |                                                        |
| SESSION 6 BUILDING MHEALTH LEADERSHIP AND DEVELOPING CHANGE AGENTS              |                                                                                                                                                           |                                                        |
|                                                                                 | <b>Aim:</b> Identify the main decisions and activities in pushing for leadership in mHealth                                                               | <b>Moderators:</b><br>Johan Bergendahl, Sean Broomhead |
| <b>10:45 – 11:25</b>                                                            | Decisions, budget and implementation                                                                                                                      | Ousmane Ly                                             |
|                                                                                 | Technical innovation and market creation                                                                                                                  | Peter Benjamin                                         |
|                                                                                 | Usability and value to patient                                                                                                                            | Bruce Dahlman                                          |
|                                                                                 | Scaling up mHealth: What have we learnt and what do we still need to know?                                                                                | Mark Tomlinson                                         |
| <b>11:25 – 12:25</b>                                                            | Discussion and feedback (plenary)                                                                                                                         |                                                        |
|                                                                                 | <b><i>For each category of stakeholders represented at the RT, what are the most important priorities to build and sustain leadership in mHealth?</i></b> |                                                        |
| <b>12:25 – 13:30</b>                                                            | Lunch                                                                                                                                                     |                                                        |

## DETAILED ROUNDTABLE PROGRAMME continued

| SESSION 7 ROADMAP FOR MHEALTH ASSISTANCE IN CLINICAL SETTINGS |                                                                                                                                                                                                                                          |                                                  |
|---------------------------------------------------------------|------------------------------------------------------------------------------------------------------------------------------------------------------------------------------------------------------------------------------------------|--------------------------------------------------|
|                                                               | <b>Aim:</b> On basis of the Roundtable discussions, assess which measures need to be prioritised for mHealth development in general and image-based solutions in particular, in order to especially serve resource-constrained settings. | <b>Moderators:</b><br>Lucie Laflamme, Lee Wallis |
| <b>13:30 – 15:30</b>                                          | Part I: Individual interventions (speakers' corner) in plenary                                                                                                                                                                           |                                                  |
|                                                               | Part II: Voting on the statements from Sessions 2 to 5                                                                                                                                                                                   |                                                  |
| <b>15:30 – 15:45</b>                                          | Refreshment break                                                                                                                                                                                                                        |                                                  |
| SESSION 8 CLOSING SESSION                                     |                                                                                                                                                                                                                                          | Moderator: Johan Bergendahl                      |
| <b>15:45 – 17:00</b>                                          | Summing up                                                                                                                                                                                                                               | Lee Wallis                                       |
|                                                               | Way forward                                                                                                                                                                                                                              | Lucie Laflamme                                   |
|                                                               | Closing                                                                                                                                                                                                                                  | Maud Olofsson                                    |

## COMMITTEE MEETINGS

### COMMITTEE MEETING

PRE-ROUNDTABLE – SUNDAY 19 FEBRUARY 2017 (VENUE: STIAS)

| Sunday 19/2          | 16:30 – 17:30                               |                                     |
|----------------------|---------------------------------------------|-------------------------------------|
| <b>16:30 – 17:30</b> | <b>Aim:</b> Final briefing and preparations | Organising Committee and Moderators |
| <b>18:00 – 20:00</b> | Informal welcoming function (braai)         | All delegates                       |

### COMMITTEE MEETING

POST-ROUNDTABLE – WEDNESDAY 22 FEBRUARY 2017 (VENUE: STIAS)

| Wednesday 22/2       | 08:45 – 14:00                                                                                                                                                                                              |                                   |
|----------------------|------------------------------------------------------------------------------------------------------------------------------------------------------------------------------------------------------------|-----------------------------------|
| <b>08:45 – 09:00</b> | Refreshments                                                                                                                                                                                               |                                   |
| <b>09:00 – 10:00</b> | <b>Aim:</b> Roundtable wrap-up, evaluation and close-out timetable                                                                                                                                         | Organising Committee              |
|                      | Did the Roundtable achieve its aims and objectives?<br>What could have been:<br><ul style="list-style-type: none"> <li>• done better?</li> <li>• done differently?</li> <li>• left undone? Why?</li> </ul> | Johan Norell Bergendahl           |
| <b>10:00 – 11:00</b> | Roadmap                                                                                                                                                                                                    | Lucie Laflamme                    |
| <b>11:00 – 12:00</b> | Finalisation timetable and responsibilities                                                                                                                                                                | Johann Groenewald & Maud Olofsson |
| <b>12:00 – 13:00</b> | Lunch                                                                                                                                                                                                      |                                   |
| <b>13:00 – 14:00</b> | Matters outstanding and closing                                                                                                                                                                            | Maud Olofsson                     |

# PARTICIPANTS

| Title | Name                 | Description                                                                                                                    | Country | e-mail                                                    |
|-------|----------------------|--------------------------------------------------------------------------------------------------------------------------------|---------|-----------------------------------------------------------|
| Prof  | Bernahu Abegaz       | CEO: African Academy of Science                                                                                                | Kenya   | b.abegaz@aasciences.ac.ke                                 |
| Ms    | Halima Adam          | Head Nurse: ED, Mubende Regional Referral hospital                                                                             | Uganda  | adam_halimah@yahoo.com                                    |
| Dr    | Mark Ansermino       | University of British Columbia                                                                                                 | Canada  | mansermino@cw.bc.ca                                       |
| Ms    | Sara Aulin           | Economic Counsellor - Embassy of Sweden                                                                                        | Sweden  | sara.aulin@gov.se                                         |
| Dr    | Pauline Bakibinga    | African Population and Health Research Center                                                                                  | Uganda  | pbakibinga@aphrc.org                                      |
| Ms    | Catharina Barkman    | Senior advisor in Health Care, Project Director of the Think Tank Forum for Health Policy                                      | Sweden  | Catharinabarkman89@gmail.com                              |
| Ms    | Debré Barrett        | App developer; Vula: product director                                                                                          | RSA     | debre@vulamobile.com                                      |
| Mr    | Peter Benjamin       | Principal, HealthEnabled                                                                                                       | RSA     | peter@healthenabled.org                                   |
| Dr    | Claudine Bill        | PHILANI Maternal, Child Health and Nutrition Trust, Medical Doctor and Project Liason for "Catch & Match"-Philani, Khayelitsha | RSA     | claudinebill502@gmail.com                                 |
| Mr    | Paul Blessing        | Medical Student & intern: AFEM                                                                                                 | USA     | paulblessing90@gmail.com                                  |
| Ms    | Lisa Blom            | PhD student, Karolinska Institutet                                                                                             | Sweden  | Lisa.Blom@ki.se                                           |
| Prof  | Isaac Bogoch         | Department of Medicine, University of Toronto                                                                                  | Canada  | isaac.bogoch@uhn.ca                                       |
| Ms    | Constance Boissin    | PhD student, Karolinska Institutet                                                                                             | Sweden  | Constance.Boissin@ki.se                                   |
| Prof  | Andrew Boulle        | Public Health Specialist, Faculty of Health Sciences, UCT                                                                      | RSA     | andrew.boulle@uct.ac.za                                   |
| Prof  | Sean Broomhead       | Chairman: African Centre for eHealth Excellence                                                                                | RSA     | sean.broomhead@acfee.org                                  |
| Mr    | Mbulelo Cabuko       | Director; National Health Information System                                                                                   | RSA     | cabukm@health.gov.za; Mbulelo.Cabuko@health.gov.za        |
| Ms    | Åsa-Britt Carlsson   | Director General: Swedish Geotechnical Institute                                                                               | Sweden  | asabritt@gmail.com                                        |
| Prof  | Sven Carlsson        | Professor and Head of Department of Informatics, Lund University                                                               | Sweden  | sven.carlsson@ics.lu.se                                   |
| Dr    | Bruce Dahlman        | Head: Family Medicine, Kabarak University & Director: Digital African Health Library                                           | Kenya   | head.familymedicine@kabarak.ac.ke                         |
| Dr    | Mohammed Dalwai      | President of the Board - Doctors Without Borders (MSF) South Africa; Co-Founder and COO of Essential EMGuidance                | RSA     | mkdalwai@gmail.com                                        |
| Ms    | Katusha de Villiers  | Graduate School of Business, UCT                                                                                               | RSA     | katusha.devilliers@gsb.uct.ac.za                          |
| Prof  | Vinod Diwan          | Professor in Epidemiology, Public Health Sciences, Karolinska Institute, Stockholm; Director: Centre for Global Health         | Sweden  | Vinod.Diwan@ki.se                                         |
| Mr    | Elin Doyle           | Medical student, Karolinska Institutet                                                                                         | Sweden  | Elin.Doyle@stud.ki.se                                     |
| Prof  | Guy Dumont           | University of British Columbia                                                                                                 | Canada  | guyd@ece.ubc.ca                                           |
| Prof  | Penelope Engel-Hills | Cape Peninsula University of Technology / Deputy Dean: Health and Wellness Sciences                                            | RSA     | EngelhillsP@cput.ac.za                                    |
| Dr    | Antonio Fernandes    | Project Manager: MomConnect                                                                                                    | RSA     | FernaA@health.gov.za; antonio.rosario.fernandes@gmail.com |
| Ms    | Karina Folkesson     | Confederation of Swedish Enterprise                                                                                            | Sweden  |                                                           |

## PARTICIPANTS continued

| Title | Name                       | Description                                                                                                                                         | Country     | e-mail                                |
|-------|----------------------------|-----------------------------------------------------------------------------------------------------------------------------------------------------|-------------|---------------------------------------|
| Prof  | Stefan Fölster             | Head: Reform Institute, Stockholm / Director, and adjunct professor of economics at the Royal Institute of Technology                               | Sweden      | stefan.folster@reforminstitutet.se    |
| Dr    | Ed Fottrell                | Senior Lecturer in Epidemiology and Global health Metrics, University College London                                                                | UK          | e.fottrell@ucl.ac.uk                  |
| Prof  | Pieter Fourie              | Adjunct Professor, Head of Biomedical Engineering Research Group (BERG), Stellenbosch University                                                    | RSA         | prfourie@sun.ac.za                    |
| Ms    | Michelle Galloway          | STIAS Media Officer                                                                                                                                 | RSA         | michelle.rotchford.galloway@gmail.com |
| Dr    | Heike Geduld               | President: African Federation for Emergency Medicine                                                                                                | RSA         | heikegeduld@yahoo.com                 |
| Prof  | Hendrik Geyer              | Director: STIAS                                                                                                                                     | RSA         | hbg@sun.ac.za                         |
| Prof  | Johann Groenewald          | STIAS Coordinator: Strategic initiatives                                                                                                            | RSA         | jpg@sun.ac.za                         |
| Prof  | Jan Gulliksen              | Human computer interaction, KTH, Stockholm                                                                                                          | Norway      | gulliksen@kth.se                      |
| Dr    | Gerald Gwinji              | Permanent Secretary for Health, Ministry of Health, Zimbabwe                                                                                        | Zimbabwe    | ggwinji@gmail.com                     |
| Prof  | Marie Hasselberg           | Public Health Sciences, Karolinska Institute                                                                                                        | Sweden      | marie.hasselberg@ki.se                |
| Mr    | John Bosco Kamugisha       | Nurse, Masaka Regional Referral Hospital                                                                                                            | Uganda      | kamugisha.jb@gmail.com                |
| Mr    | Anders Klingberg           | PhD student, Karolinska Institutet                                                                                                                  | Sweden      | Anders.Klingberg@ki.se                |
| Dr    | Kerstin Klipstein-Grobusch | Associate Professor of Global Health   University Medical Center Utrecht                                                                            | Netherlands | k.klipstein-grobusch@umcutrecht.nl    |
| Prof  | Lucie Laflamme             | Chair: Public Health Sciences, Karolinska Institute / Professor in injury epidemiology and prevention, Head of Department of Public health Sciences | Sweden      | lucie.laflamme@ki.se                  |
| Ms    | Anna Larsson               | Medical journalist, Sveriges Radio AB                                                                                                               | Sweden      | anna.larsson@sr.se                    |
| Prof  | Claude Laurent             | Extraordinary professor at Department of Speech & Language Pathology and Audiology, University of Pretoria                                          | Sweden      | Claude.laurent@umu.se                 |
| Dr    | Ingrid le Roux             | Medical Director: Philani Maternal, Child Health & Nutrition Project                                                                                | RSA         | ingridleroux@gmail.com                |
| Mr    | Clyde Lewis                | Imaging General Manager Africa   GE Health care                                                                                                     |             | Clyde.Lewis@ge.com                    |
| Prof  | Johan Lundin               | Research Director, University of Helsinki & Karolinska Institute                                                                                    | Finland     | johan.lundin@fimm.fi                  |
| Dr    | Ousmane Ly                 | Director General: eHealth, MoH, Mali                                                                                                                | Mali        | oussouly@gmail.com                    |
| Mr    | Shiletsi Makhofane         | Head: Government & Industry Relations - Ericsson SSA                                                                                                | RSA         | shiletsi.makhofane@ericsson.com       |
| Ms    | Margaret Modise            | Program Manager   HISP (Health Information Systems Program SA)                                                                                      | RSA         | margaret@hisp.org                     |
| Dr    | Eddie Mukooyo              | Ministry of Health, Uganda                                                                                                                          | Uganda      | emukooyo@gmail.com                    |
| Hon.  | Aaron Motsoaledi           | Minister of Health, RSA                                                                                                                             | RSA         | sethom@health.gov.za                  |
| Dr    | Daniel Murenzi             | Secretary: EAC eHealth Informatics                                                                                                                  | Tanzania    | dmurenzi@eachq.org                    |



| Title | Name                    | Description                                                                                                                        | Country     | e-mail                                                  |
|-------|-------------------------|------------------------------------------------------------------------------------------------------------------------------------|-------------|---------------------------------------------------------|
| Dr    | Chimwemwe Mvula         | Assistant Director: Clinical Services, Ministry of Health, Malawi                                                                  | Malawi      | cjmvula@yahoo.co.uk                                     |
| Dr    | Andreas Mwoombola       | Permanent Secretary: Ministry of Health and social services, Namibia                                                               | Namibia     | andreas.mwoombola@mhss.gov.na                           |
| Dr    | Barni Nor               | Somalia section, Embassy of Sweden, Nairobi                                                                                        | Somalia     | barni.nor@gov.se                                        |
| Ms    | Agnes Nordquist         | Medical student, Karolinksa Institutet                                                                                             | Sweden      | Agnes.Nordquist@stud.ki.se                              |
| Mr    | Johan Norell Bergendahl | Executive Coach, Jumpahead AB/Prev CMO, Ericsson                                                                                   | Sweden      | johan@jumpahead.se                                      |
| Prof  | Peter Nyasulu           | Head: Public Health, Monash South Africa                                                                                           | RSA         | peter.nyasulu@monash.edu                                |
| Ms    | Maud Olofsson           | Wallenberg Foundation Ambassador                                                                                                   | Sweden      | maud@romonorr.se                                        |
| Mr    | Rolf Olofsson           | Former Mayor                                                                                                                       | Sweden      |                                                         |
| Prof  | Olola Oneko             | Kilimanjaro Cervical Cancer Screening Project, Kilimanjaro Christian Medical Centre                                                | Tanzania    | ololaoneko03@gmail.com                                  |
| Dr    | Yogan Pillay            | DDG: Department of Health                                                                                                          | RSA         | ypillay@intekom.co.za;<br>patoddgprogram3@health.gov.za |
| Ms    | Dinnah Ruhwanya         | Nurse: Emergency and critical care                                                                                                 | Tanzania    | rdinnah@gmail.com                                       |
| Dr    | Nanna Schneidermann     | Postdoctoral research fellow, Anthropology, University of Cape Town   ex Oslo and Akershus University College for Applied Sciences | Danish      | schneidermanns@gmail.com                                |
| Mr    | Hodge Semakula          | Executive Secretary/CEO: East African Communications Organisation (EACO)                                                           | Uganda      | hsemakula@eaco.int                                      |
| Prof  | De Wet Swanepoel        | Speech Pathology & Audiology, University of Pretoria                                                                               | RSA         | dewetswanepoel@gmail.com; dewet.swanepoel@up.ac.za      |
| Prof  | Mark Tomlinson          | Stellenbosch University, Department of Psychology                                                                                  | RSA         | markt@sun.ac.za                                         |
| Dr    | Mpoki Ulisubisya        | Permanent Secretary: Ministry of Health Community Development Gender Elderly and Children                                          | Tanzania    | drmpoki@gmail.com                                       |
| Prof  | Eddy van Doorslaer      | Erasmus University                                                                                                                 | Netherlands | vandoorslaer@ese.eur.nl                                 |
| Prof  | Lee Wallis              | African Federation for Emergency Medicine                                                                                          | RSA         | lee.wallis@afem.info                                    |
| Prof  | Lars Weinehall          | Public Health & Clinical Medicine, Umeå University                                                                                 | Sweden      | lars.weinehall@epiph.umu.se                             |
| Mr    | Carlos Yerena           | Partnership development manager, Dimagi                                                                                            | Mexico      | cyerena@dimagi.com                                      |

## CONTACT DETAILS

**Hendrik B Geyer** Director of STIAS E-mail: hbg@sun.ac.za Tel: +27 (0) 21 808 2185  
**Maria Mouton** PA to the Director of STIAS E-mail: mmouton@sun.ac.za Tel: +27 (0) 21 808 2963 Fax: +27 (0) 21 808 2184  
**Johann Groenewald** Coordinator: Strategic initiatives E-mail: jpg@sun.ac.za Tel: +27 (0) 21 808 9439

# NOTES

The STIAS-Wallenberg Roundtables bring together research specialists, some of whom would have participated in the preparatory workshops and seminars, with key decision-makers from government, business and civil society. The purpose of the Roundtable is to create a forum for exchange of ideas among researchers on the one hand and leaders in government and business, practitioners or potential beneficiaries on the other.

## Presenters and speakers

Presenters are requested to limit their contributions in this Roundtable programme to about ten minutes per topic, in order to provide equivalent time to other presenters and/or topics, and especially to allow ample time for roundtable discussions and feedback.

Speakers who wish to use power-point are - in the interests of saving time - requested to please upload their presentation slides in the interval before the actual start of the session.

Because of the presence of non-technical persons in die audience, speakers are encouraged to use technical jargon sparingly.

## Moderators

Apart from interesting and stimulating presentations, the success of the Roundtable depends in equal measure on the proper facilitation by the session moderators, who inter alia are responsible for –

- The overall time management in the session which they are chairing. This may include
  - Alerting speakers/presenters about the time left to finish their talk or presentation.
  - Facilitating an orderly meeting.
  - Closing the session at the appropriate time.
- Stimulating discussion and guiding participants to stay on the theme of the session or the Roundtable.
- Thanking presenters, speakers and rapporteurs for their contributions.
- Assisting with the formulation and recording of the main points / statements of the session.

## Rapporteurs

Designated rapporteurs should report the salient points of discussion in their groups. Their reports should be brief and to the point, without too much elaboration (if required, elaboration can be added during general discussion). In the interests of saving time, rapporteurs should limit their presentations to three statements at most; and rapporteurs following the first rapporteur should focus on new or additional points and not repeat statements already covered in previous group reports.

## Instructions – Discussion in smaller groups / roundtables (sessions 2 to 5)

During the group work, you will be expected to discuss the specific questions in smaller groups. The time assigned for the discussion and feedback is up to 60 minutes per session and it is expected that everyone in the group will be given the opportunity to express his/her point of view. Besides discussing specific questions, the group will have to summarize its key messages to be given in feedback in plenary and time should be allowed for this.

In sum, the time available for the discussion, synthesizing of key messages, and providing feedback is up to 60 minutes per session. As many of the questions to be discussed are relatively complex, conversations need to be focused.

In each group there will be:

1. *a discussion leader*, appointed by the organisation group, who will chair the session, make sure everyone has the opportunity to voice their opinion / point of view, take responsibility to ensure that each table answers and highlights their opinion on the questions for discussion.
2. *a rapporteur*, appointed by the organisation group, whose task is to briefly present the key message / opinion of the group as feedback to all the groups when they gather in plenary again. These presentations need to be brief and preferably not be longer than two minutes. In the interests of saving time, rapporteurs should limit their presentations to three statements at most; and rapporteurs following the first rapporteur should focus on new or additional points and not repeat statements already covered in previous groups' reports.
3. *a note taker*, appointed by the organisation group, who will keep record of what has been discussed and said during the group / roundtable discussion. This will be useful for the concluding reports during the plenary presentation after each group discussion, and for the writing of the final editorial overview of the Roundtable outcomes and the roadmap.

Good luck!

# ORGANISING COMMITTEE



**Lucie Laflamme**

Chair: Public Health Sciences, Karolinska Institute / Professor in injury epidemiology and prevention, Head of Department of Public health Sciences



**Marie Hasselberg**

Public Health Sciences, Karolinska Institute



**Lee Wallis**

African Federation for Emergency Medicine



**Catharina Barkman**

Senior advisor in Health Care, Project Director of the Think Tank Forum for Health Policy



**Sean Broomhead**

Chairman: African Centre for eHealth Excellence



**Guy Dumont**

University of British Columbia



**Michelle Galloway**

STIAS Media Officer



**Johann Groenewald**

STIAS Coordinator: Strategic initiatives



**Ingrid le Roux**

Medical Director: Philani Maternal, Child Health & Nutrition Project



**Nel-Mari Loock**

STIAS Logistics support



**Johan Lundin**

Research Director, University of Helsinki & Karolinska Institute



**Maud Olofsson**

Wallenberg Foundation Ambassador



**Johan Norell Bergendahl**

Executive Coach, Jumbahead AB



**Peter Nyasulu**

Head: Public Health, Monash South Africa



**Lars Weinehall**

Public Health & Clinical Medicine, Umeå University

